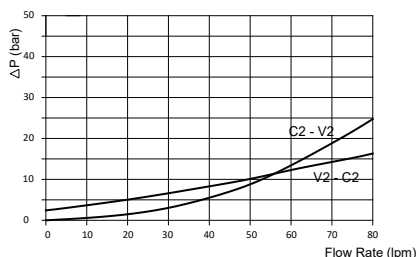
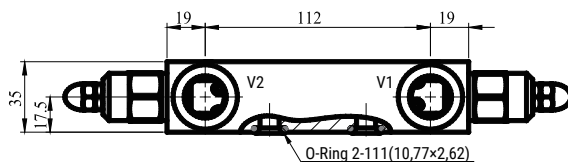
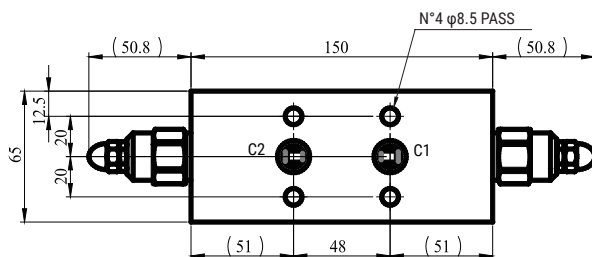
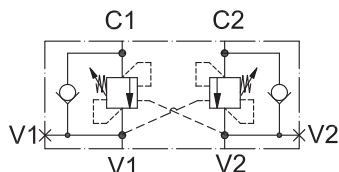


CBFD.000.41.Z06

FLANGED MOUNTING 40x48

TECHNICAL DATA

Nominal flow	40L/min
Max. working pressure	350bar
Setting pressure	350bar
Pilot ratio	4.25:1
Material	Steel



Note:

Pressure setting must be 30% higher than pressure induced by the load.

ORDERING CODE

CBFD . **000** . **4** . **1** . **Z** . **06**

Pilot ratio
4 - 4.25:1

Ports
06 - M16*1.5