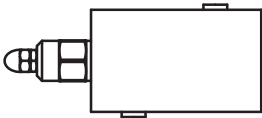
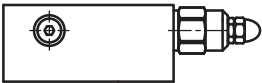
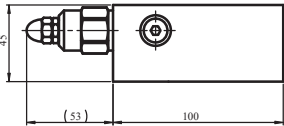
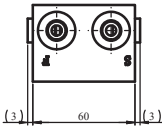
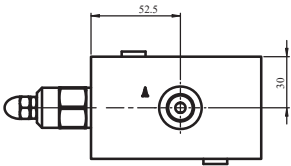
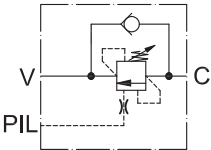


KF-XBJOG01

IN LINE

TECHNICAL DATA

Nominal flow	16L/min
Max. working pressure	350bar
Setting pressure	350bar
Pilot ratio	4.25:1
Body Material	Aluminum



Note:
Pressure setting must be 30% higher than pressure induced by the load.

ORDERING CODE

KF - **XBJG01**