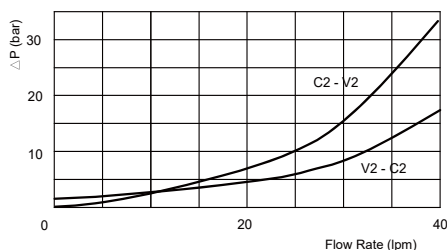
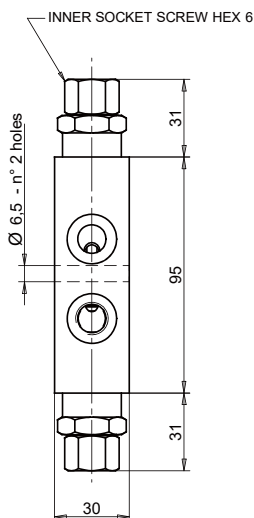
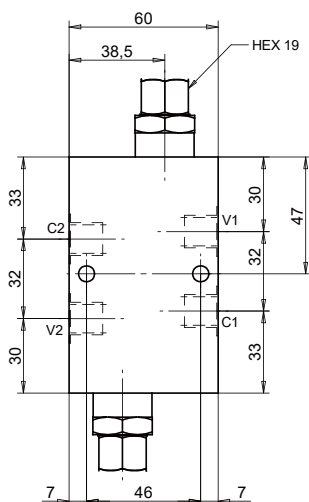
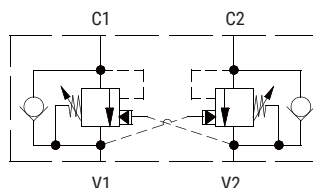


CBPD.000.41.A02

IN LINE

TECHNICAL DATA

Nominal flow	25L/min
Max. flow	40L/min
Max. working pressure	350bar
Setting pressure	4:1
Pilot ratio	Steel
Body Material	



Ports	
V1/V2/C1/C2	G 1/4"

Note:
Pressure setting must be 30% higher than pressure induced by the load.

ORDERING CODE

CBPD	.	000	.	4	.	A	.	02
------	---	-----	---	---	---	---	---	----

Pilot ratio
4 - 4:1

Spring range
1 - 160~350bar

Ports
02 - G 1/4"
03 - G 3/8"
04 - G 1/2"