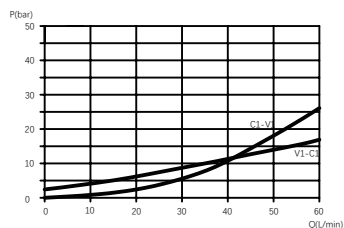
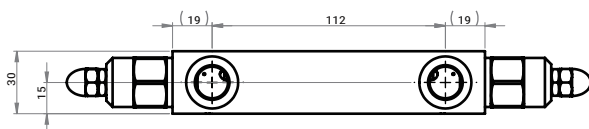
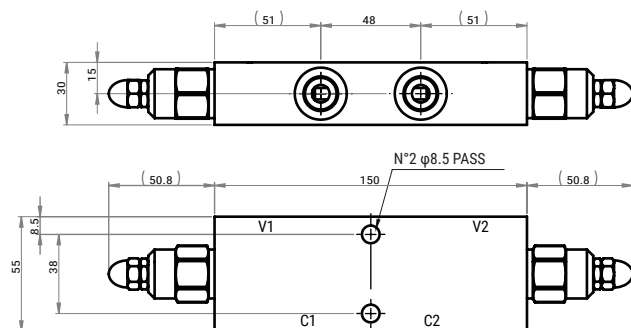
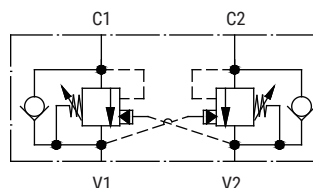


CBPD.000.41.A03

IN LINE

TECHNICAL DATA

Nominal flow	60L/min
Spring range	160~350bar
Max. working pressure	350bar
Setting pressure	350bar
Pilot ratio	4.25:1
Body Material	Steel



Ports
C1/C2/V1/V2 G 3/8"

Note:

Pressure setting must be 30% higher than pressure induced by the load.

ORDERING CODE

CBPD	.	000	.	4	.	1	.	A	.	03
------	---	-----	---	---	---	---	---	---	---	----

Pilot ratio
4 - 4.25:1

Ports
03 - G 3/8"