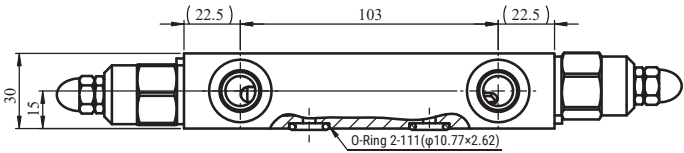
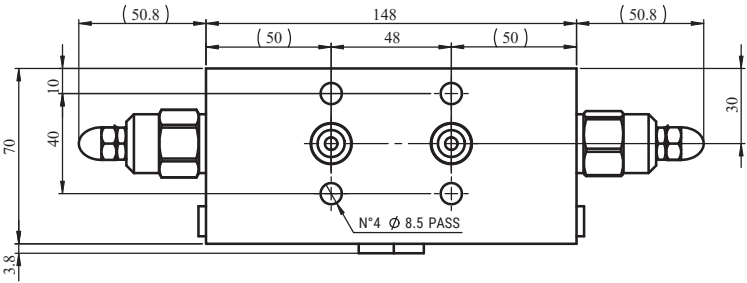
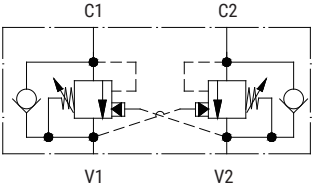


NW03B1-ST

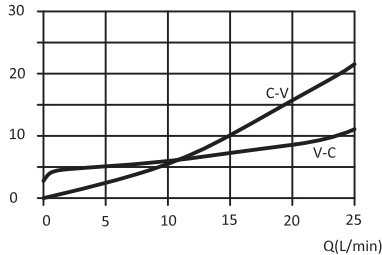
FLANGED MOUNTING

TECHNICAL DATA

Nominal flow	25L/min
Max. working pressure	350bar
Setting pressure	300bar
Pilot ratio	8.5:1
Body Material	Aluminium alloy



P(bar)



Note:

Pressure setting must be 30% higher than pressure induced by the load.

Ports	
C1/C2	φ5
V1/V2	G 3/8"

ORDERING CODE

N W 03 **B 1** - **S T**