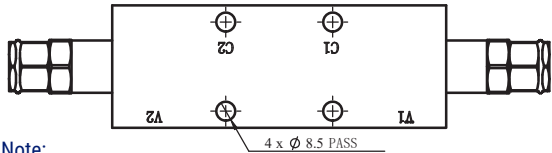
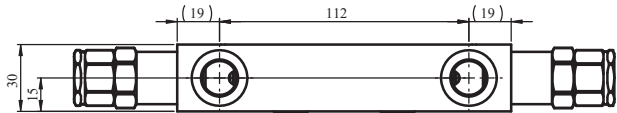
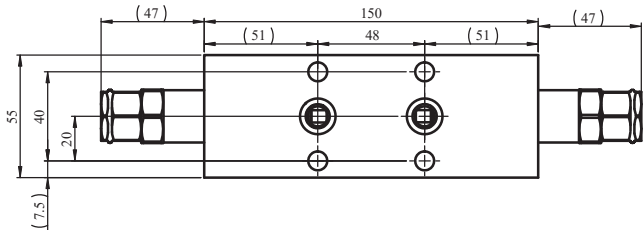
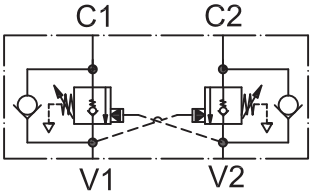


NW01B1-SL

FLANGED MOUNTING

TECHNICAL DATA

Nominal flow	60L/min
Max. working pressure	350bar
Setting pressure	20bar
Pilot ratio	1:0
Body Material	Steel



Note:

Pressure setting must be 30% higher than pressure induced by the load.

4 x Ø 8.5 PASS

Ports	
C1/C2	φ9
V1/V2	G 3/8"

ORDERING CODE

N W 01	B1	-	S L
--------	----	---	-----